



Success through Partnership



The undoubted success of Mill Stainless has, since their very first day in 1978, been based on outstanding service. They have become East Anglia's leading Stainless Steel Stockholder and Processor by developing a "success built on service" culture and by ensuring that they reinvest in their own success.

Stockholding has been the bedrock of the company's success; being able to supply the right product, in the right grade and at the right price is easy to promise. Mill Stainless has been delivering their promises for over 30 years.

Processing, whether it's Shearing, Sawing, Bending, Laser Cutting or Water Jet Cutting, Mill Stainless offer them all.



A Water Jet Sweden 4020ED twin headed cutting machine is impressive by any standards. Cutting a range of materials to an accuracy of +/- 0.25mm and a positional accuracy of +/- 0.05mm per 1000mm you need a very special machine that incorporates the very latest technology and control systems.

The 4020ED cuts metals, ceramics, glass, foam, Perspex etc. Mill accept customers' free issue material, where that material is not available from them, which means the customer has the control over material and is only charged for the cutting costs involved.

Mill's Laser Cutting offers clean cut Stainless Steel up to 20mm thick, with a maximum cutting area of 3000mm x 1500mm. The laser virtually eliminates distortion with its low thermal input; ensuring components are precise and identical. Laser cutting is ideal for small batches and large batches alike, prototypes or complicated shapes saving the customer the need for other conventional operations i.e. punching, drilling, milling and deburring.



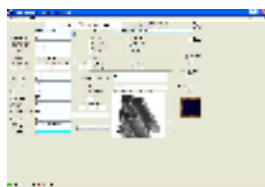
Bending metal is not as simple as sometimes it may seem, but thanks to Mill's 250 tonne pressbrake with ultimate pressure reference (PR); bending technology and dynamic crowning, they can fulfil the highest demands for the production of sheet metal parts - and for the most varied of applications; both for light gauge sheet metal and heavier plates.



Offering this degree of flexibility and accuracy in processing requires significant investment but these are the type of investment Mill Stainless has always been ready to make to support their commitments to "success built on service".

Mill have always wanted to work with an IT supplier that understood the issues of a metal stockholding and processing company and PCI Systems of Sheffield has been their preferred choice since the 1990's.

PCI have been writing software applications for the metals sector since the 1980's, first in UNIX and now in Microsoft



Windows. Mill first started using PCI's UNIX system, but in 2007 they decided to invest in new technology and based on PCI's performance and their new Windows based Prof.IT system, they were Mill's first choice. The Prof.IT suite of applications helps Mill manage their stocks, sales, purchases, despatches, invoices and profitability and offers a full range of



applications including Processing Optimisation, Full Certification, Critical Path Analysis, Transport Manager and Customer Relationship. It interfaces simply and easily with Mill's accounts application and most other leading packages.

PCI are delighted to be an important business partner of Mill Stainless Ltd.